



Measuring and monitoring integration in Denmark

Line Møller Hansen

Special Policy Advisor

Ministry of Refugee, Immigration and Integration Affairs





Topics

- Background – the Danish case
- Benchmarking and performance management
- Example: measuring social inclusion





Background

- Integration Act: 3 year introductory program for newcomers (language and job training)
- After 3 years: ordinary job or language training for unemployed
- Wide range of integration projects local, regional, national projects

Immigrants and descendants from non-western countries:

6 % of the population

57 % employment rate (native population 79 %)

38 % of descendants are under vocational education/high school (native population 49 %, immigrants 14 %)



Monitoring system on integration

- Wide range of integration indicators
- Evaluations and other specific analysis
- Benchmarking the municipalities success in integrating newcomers
- Benchmarking the language schools success in teaching Danish to newcomers
- New: theory of change, performance management approach (focus on impact)

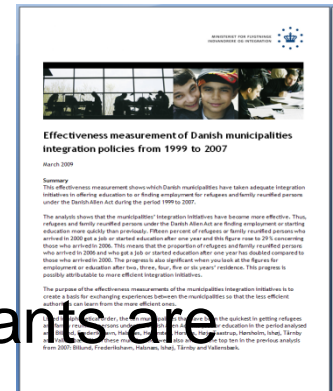


Benchmarking analysis of Danish municipalities integration policies 1999-2007

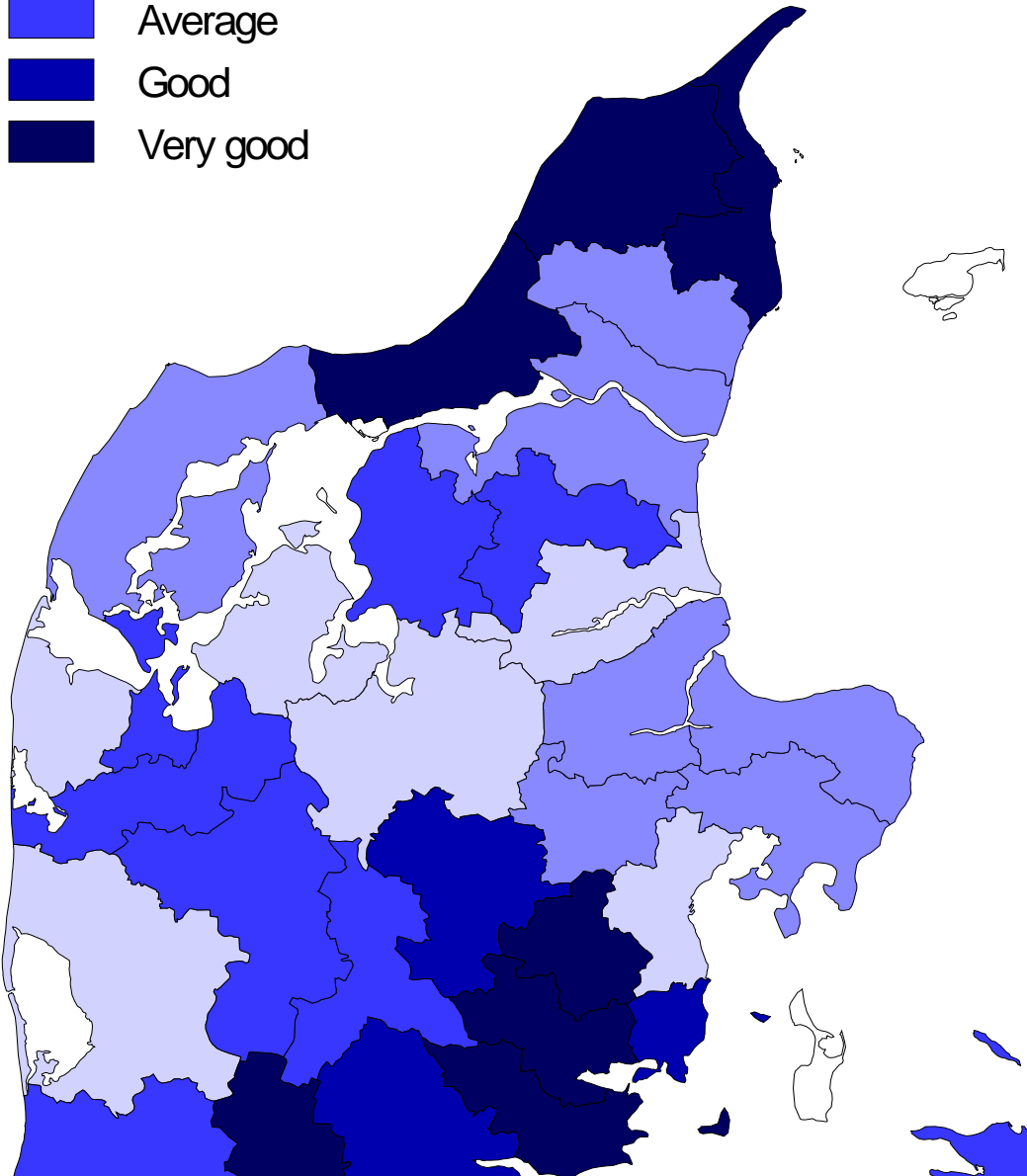
Indicator of the success of the municipal integration policy: the average period of time before newly arrived immigrants are becoming employed or enrolled in education

Results:

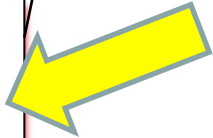
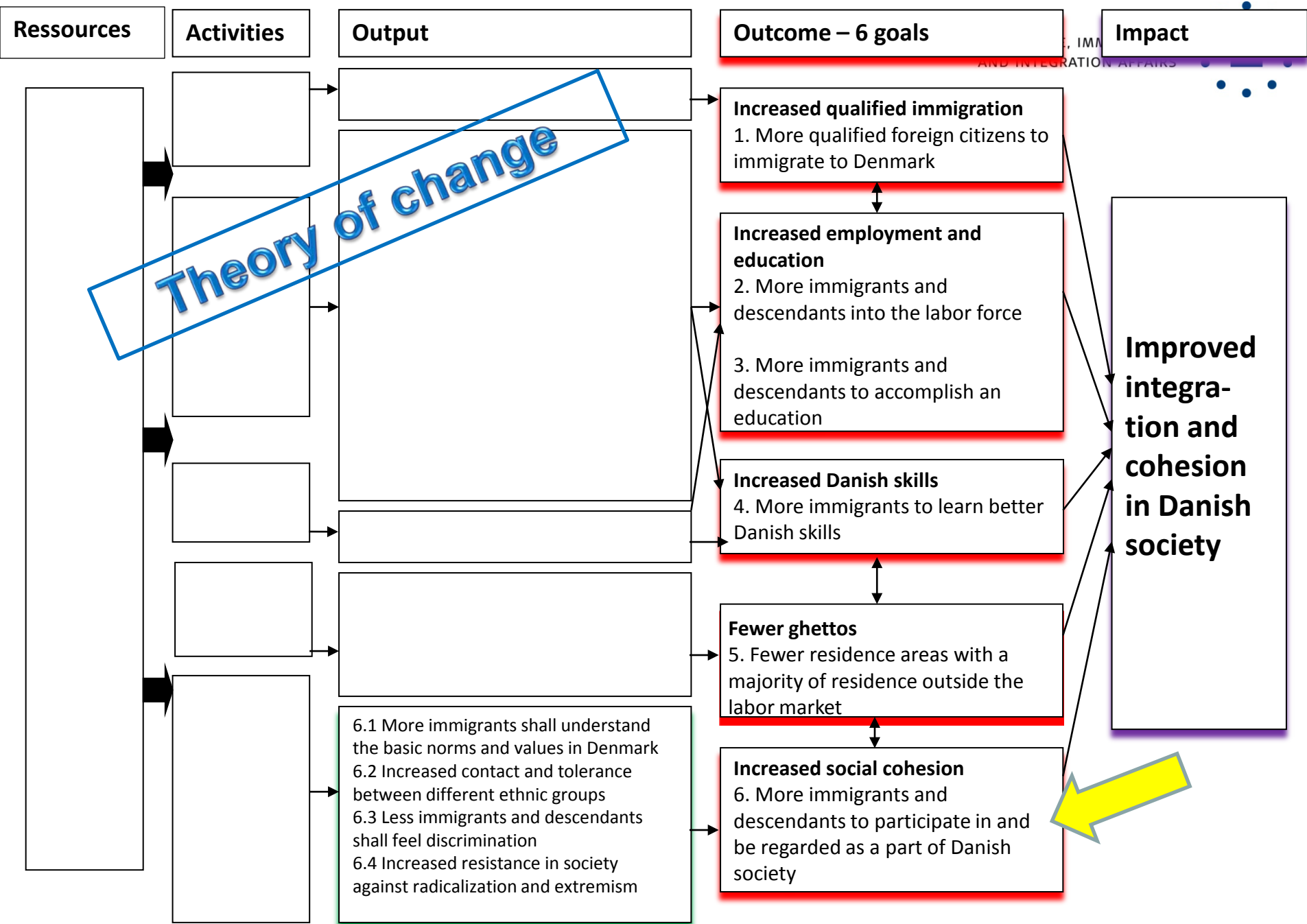
- ➔ in average 45 month before newly arrived immigrants are becoming employed or enrolled in education
- ➔ 47 pct. of all immigrants arrived in 1999-2007 are now employed or under education
- ➔ improvement since 2001, now faster integration



Categories



Ranking of Danish municipalities in five categories compared to how good the municipalities are at getting new arrivals under the Danish Integration Act into employment or education in the period 1999-2007.





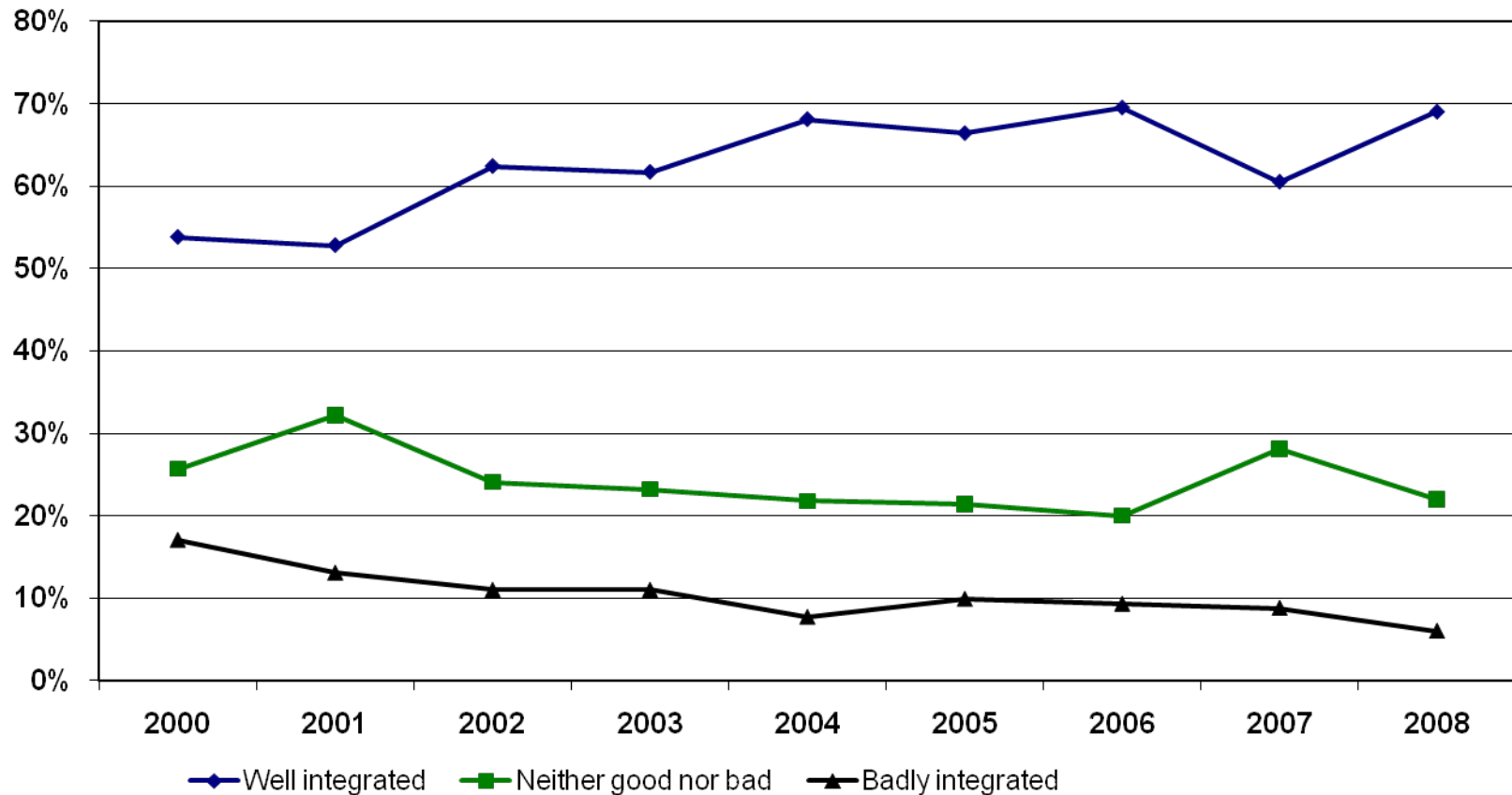
Targets	Indicators
6. More immigrants and descendants to participate in and be regarded as a part of Danish society	Membership among immigrants of organizations, associations, political parties etc.
	Election rate among immigrants
	Share of immigrants that are feeling integrated
	Participation rate among immigrants in parental school meetings



Targets	Indicators
6.1 More immigrants shall understand the basic norms and values in Denmark	Knowledge among immigrants of basic norms and values in Denmark
6.2 Increased contact and tolerance between different ethnic groups	Share of immigrants with native friends
	Share of immigrants that are marrying an immigrant or native residing in Denmark
6.3 Less immigrants and descendants shall feel discrimination	Share of immigrants that are feeling discriminated against
6.4 Increased resistance in society against radicalization and extremism	Trust towards institutions like courts, police, public administration etc.



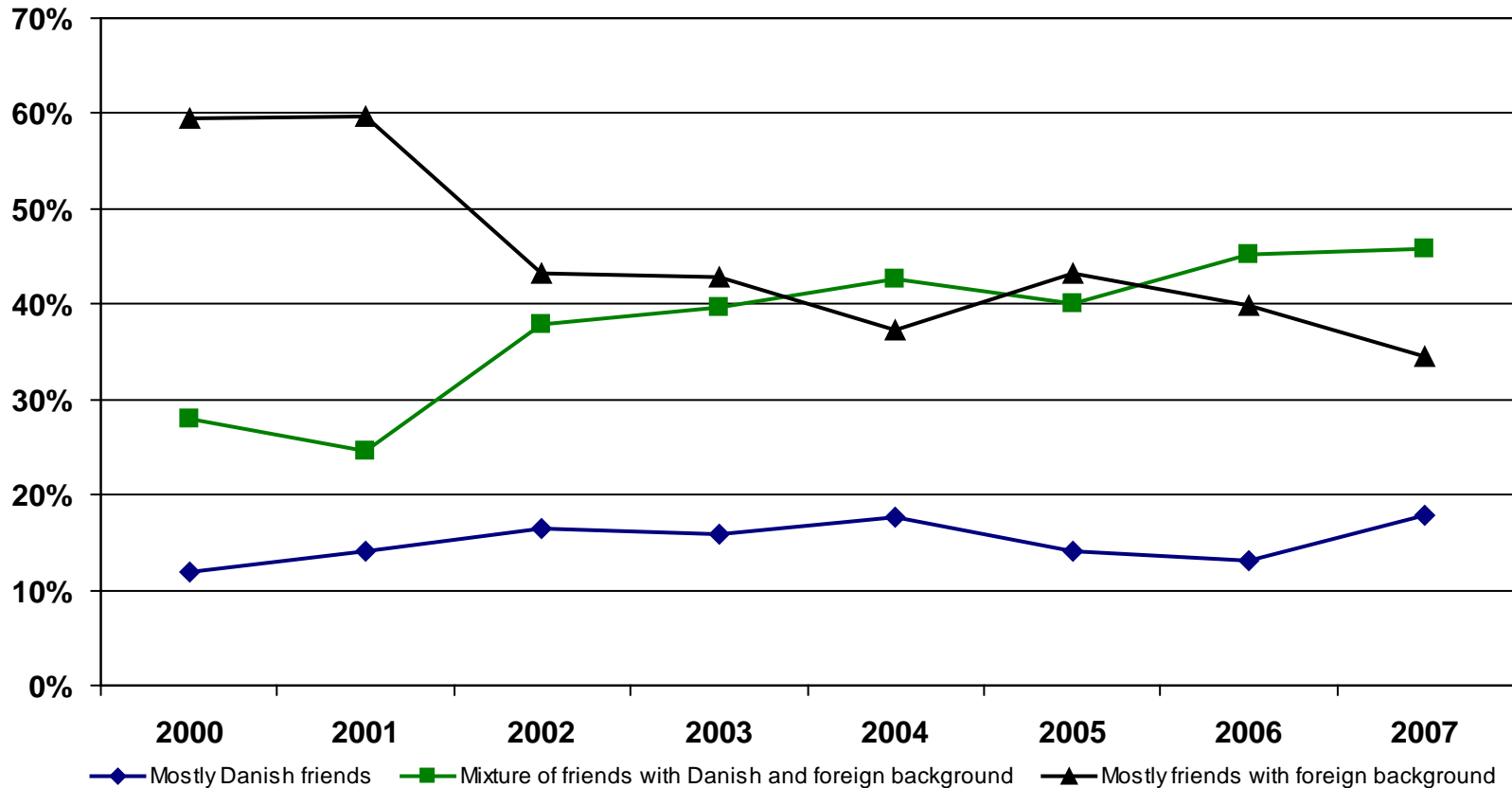
Development in feeling integrated



Source: Catinét survey regarding Intergration in Denmark 1999-2007, 15th survey



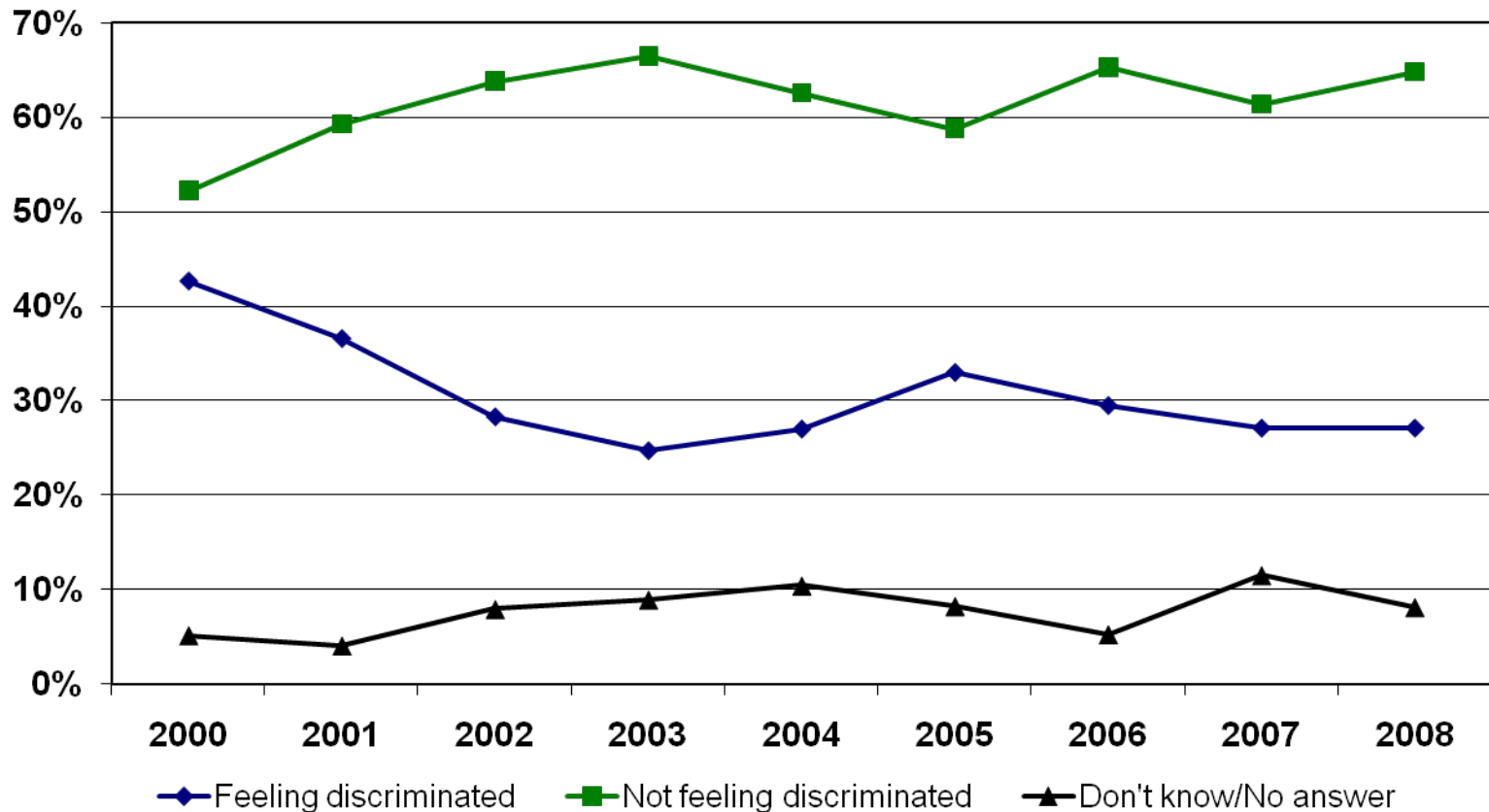
Development in the amount of immigrants and descendants from non-western countries having Danish friends



Source: Catinét survey regarding Intergration in Denmark 1999-2007, 15th survey



Development in feeling discriminated



Source: Catinét survey regarding Integration in Denmark 1999-2008.



Summing up

- Positive integration development in Denmark
- Benchmarking as knowledge sharing generator
- NEW: Focus on impact rather than output



Read more at www.nyidanmark.dk/en-us

MINISTERIET FOR FLYGTNINGE
INDVANDRERE OG INTEGRATION



Effectiveness measurement of Danish municipalities integration policies from 1999 to 2007

March 2009

Summary

This effectiveness measurement shows which Danish municipalities have taken adequate integration initiatives in offering education to or finding employment for refugees and family reunified persons under the Danish Alien Act during the period 1999 to 2007.

The analysis shows that the municipalities' integration initiatives have become more effective. Thus, refugees and family reunified persons under the Danish Alien Act are finding employment or starting education more quickly than previously. Fifteen percent of refugees or family reunified persons who arrived in 2000 got a job or started education after one year and this figure rose to 29% concerning those who arrived in 2006. This means that the proportion of refugees and family reunified persons who arrived in 2006 and who got a job or started education after one year has doubled compared to those who arrived in 2000. The progress is also significant when you look at the figures for employment or education after two, three, four, five or six years' residence. This progress is possibly attributable to more efficient integration initiatives.

The purpose of the effectiveness measurements of the municipalities integration initiatives is to create a basis for exchanging experiences between the municipalities so that the less efficient authorities can learn from the more efficient ones.

Listed in alphabetical order, the ten municipalities that have been the quickest in getting refugees and family reunified persons under the Danish Alien Act into jobs or education in the period analysed are: Billund, Frederikshavn, Halsnæs, Hedensted, Horsens, Høje-Taastrup, Hørsholm, Ishøj, Tårnby and Vallensbæk. Six of these municipalities were also amongst the top ten in the previous analysis from 2007: Billund, Frederikshavn, Halsnæs, Ishøj, Tårnby and Vallensbæk.

MINISTRY OF REFUGEE, IMMIGRATION
AND INTEGRATION AFFAIRS



INTEGRATION 2009 NINE FOCUS AREAS

